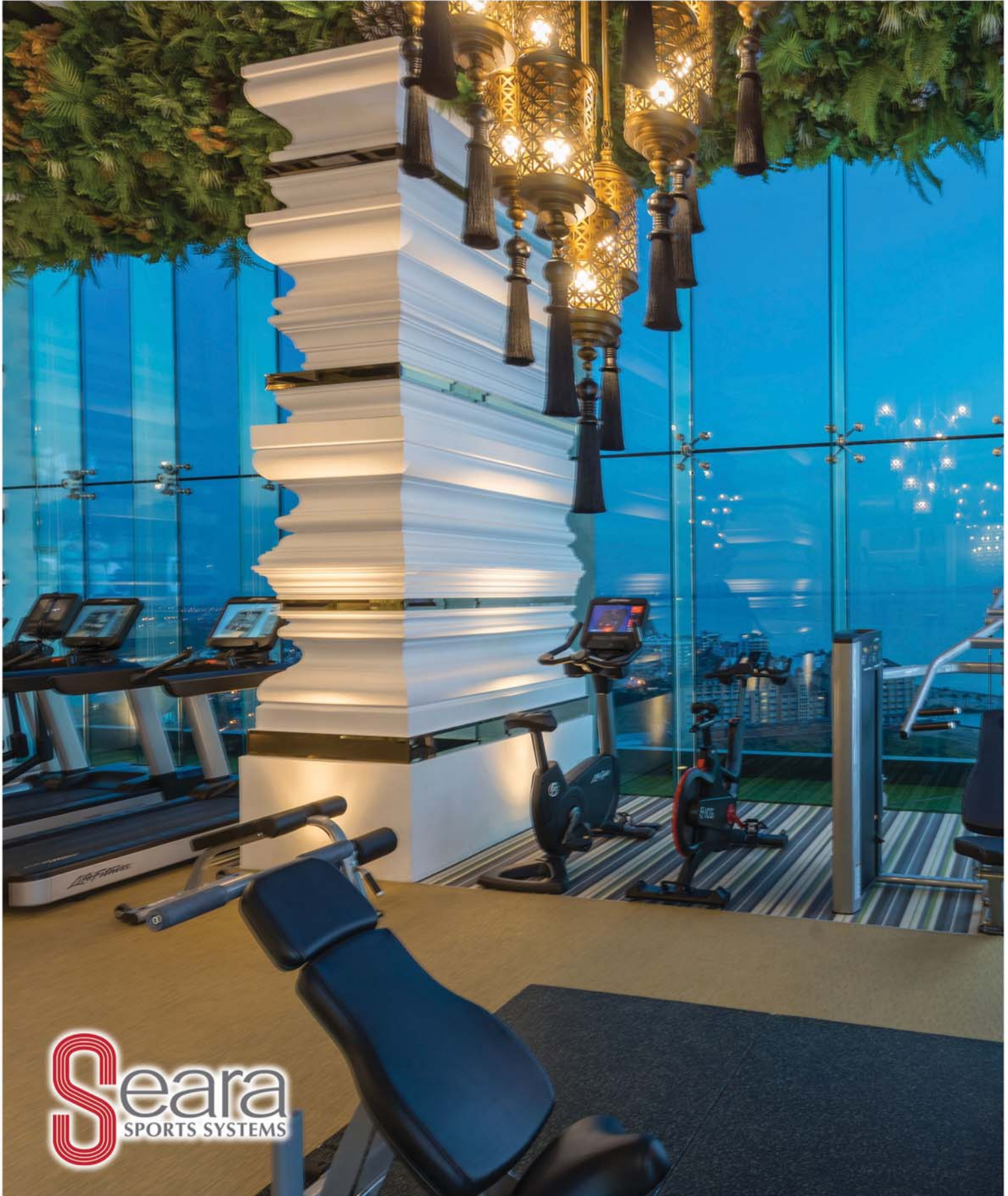


— DISCOVER —
PATTAYA



COMPLIMENTARY COPY



COMMERCIAL FITNESS

Seara (Sports Engineering And Recreation Asia) is a company with over thirty years of experience. They offer services that include the planning, engineering, and supply of quality fitness, sports and athletic products, as well as complete sporting and recreational facilities. Many of Seara's commercial customers include residential property developers such as The Riviera Group, shown on the cover and above with their latest luxury development Ocean Drive.

Sports Systems for Commercial and Home Use



SCHOOLS

Seara also has an excellent reputation with educational institutions. With outdoor recreational and athletic training facilities that include landscaping hard, grass, clay tennis courts, football pitches, and track and athletic fields. Also indoor multi-purpose halls, with custom-designed fitness and flooring systems.



HOME FITNESS

If you are planning your own home gym Seara can ensure it contains everything you need. With in-house designers and advisors, Seara has years of experience that they can share with you for the installation, construction, and execution of all your fitness requirements.



HOTELS

Sports construction built to international standards has garnered Seara an excellent reputation for the construction of high quality sports facilities built for hotels and resorts. Not only for branded urban hotels and five star resorts but also sports centers, private clubs, hospitals, health centers, and even military facilities.

CLUB FACILITIES

With the continued success of sports clubs in the area providing a genuine country club experience, Seara's expertise in understanding South East Asia's terrain and extreme weather conditions means they can offer their invaluable insight and technical support. Whether working directly with the owners or with the architects and project managers, the attention to detail and selection of the best product for specific conditions has made Seara a market leader.



With many spectacular showrooms across Thailand, Vietnam and Cambodia. Here in Pattaya you can contact the showroom at

Tel 038 231 376

143/126-128 Moo 12, Chaiyapruk Road, Nongprue, Bang Lamung, Chonburi 20150

Website <https://searasports.com>

Email info@searasports.com

DISCOVER PATTAYA

CONTRIBUTORS

Rodney James Charman
Kim Waddoup
Phil Mitchell
James Kemp
Kanchan Nath
Sam Songpone Siriwanlert
Gloria Jones
Steve Wade
Barry Upton
Cheyenne Hollis
Rick Click
Panadda karen Taraponkiree
Claire Lim

CONTENTS

COVER STORY

SEARA SPORTS SYSTEMS

DISCOVERING

- 06 AVANI'S FABULOUS NEW ROOMS
- 15 PATTAYA TO PHUKET FUNDRAISING
- 16 VAN GOGH LIVE IN BANGKOK
- 18 THE NEW PRINCIPAL OF REGENTS INTERNATIONAL
- 20 THE IMPORTANCE OF ADDITIONAL TUITION
- 24 OPTICIANS IN THAILAND

SPORTING AND LEISURE

- 28 YACHT STYLE
- 34 SPORTS UPDATE
- 26 MANTA RAY CONSERVATION
- 38 WILDLIFE FRIENDS FOUNDATION

DISCOVER GOLF

- 30 JON RAHM AT THE MASTERS

DISCOVER MOTORING

- 32 MOTORING NEWS

EASY LIVING

- 40 What's on the Small Screen
- 41 What's on the Big Screen
- 42 Beat the Heat
- 45 Confessions of a Pop Tart
- 46 Crossword
- 47 Sudoku
- 49 Solutions and Important numbers

PROPERTY AND TRAVEL

- 50 LOCATIONS TO VISIT
- 52 LONDON'S SOUTH BANK
- 56 SWIMMING POOL TRENDS
- 58 TIPS FOR PROPERTY LISTINGS
- 59 POP UP PARKS IN BANGKOK



This Month in Discover Pattaya

Hi Everyone

If all this hot weather has you steamed up, we hope to offer a little relief with some soothing images in this month's edition. Perhaps our swimming pool trends will help to inspire you to have your own watery oasis at home? Or you can read about the Manta Rays and what is being done to help preserve these magical creatures.

We have some excellent gizmos for you to view in our "Beat the Heat" pages. Also, Yacht Style presents a great idea for a cooling day out with party boats and Ocean Yachting are just the people to help you with that.

Spare a thought for James Lee Valentine doing the amazing feat of walking from Pattaya to Phuket for a very worthy cause. Both he and Take Care Kids would value your support!

Have a great month everyone and don't forget to keep hydrated!

Gloria x
gloria@pattayatradr.com

Pattayatradr.com Pattaya Trader YouTube



Interested in advertising?

Phone: 0837 683 696

We will give you the best possible deals and help your business grow

DISCOVER PATTAYA



*Why not reach out to tourists, expats and residents alike through **DISCOVER PATTAYA**, the city's premier printed and social media outlet.*

With our complimentary full colour magazine, which is available online at pattayatrader.com from the first of every month and in print, plus our strong social media presence, we can reach the new customers that your business needs.

BE PART OF THE DISCOVERY

With our printed and online magazine DISCOVER PATTAYA, quality videos by Barry & Gloria tailored to your business and extensive social media coverage to our many thousands of followers, your business will get the coverage it needs for success.

☎ 083 768 3696



pattayatrader.com



gloria@pattayatrader.com

FACEBOOK PAGES (21,000 FOLLOWERS)



Pattaya Trader Facebook page



Pattaya Trader Facebook group



Pattaya Trader Expat Ladies group

PLUS 300,000 THROUGH AFFILIATES.



Start your Smart life

Digital Door Lock

DL7800

Unlock by
Hafele smart living application



Application



Fingerprint



Key Card



PIN Code



Key



New arrivals in Dining

Aluminium Table with HPL top, grey or white



SIZES:

300 x 120x 75 cm

10 to 14 Persons **34.990.-**

240 x 110x 75 cm

8 to 10 Persons **29.990.-**

200 x 110x 75 cm

6 to 8 Persons **24.990.-**



Alu Polywood Dining Table

11.990.-

3 colors grey,taupe,white

150 x 90x 75 cm



Alu Polywood Dining Table

5.790.-

3 colors grey,taupe,white

80 x 80x 75 cm



PATTAYA Sukhumvit Baan & Beyond, Tel: (Fr) 085 363 5353 (Th) 063 889 5876
SATTAHIP Sukhumvit, Boontavorn Tel: (Fr) 085 363 5353 (Th) 063 889 5876
PHUKET Chalermprakiat 4024 Hafele center Tel: 066 930 8800

www.edenkothailand.com

EdenKo
Outdoor Furniture

AVANI

Pattaya Resort

SUNSET ROMANCE

Treat yourself to an exceptional experience with your loved one. Stay two-nights in a Corner Suite or a One Bed Room Suite and enjoy homemade chocolates, daily breakfast, sunset cocktails and much more in your favourite treats.

Avani Sea View Corner Suite

- 2-night consecutive stay in Avani Sea View Corner Suite
- Welcome chocolates
- Daily breakfast for two
- Private BBQ or western set dinner for two at your balcony
- One bottle of wine (red or white)
- Two sunset cocktails
- THB 500 spa voucher per room per stay
- 20% off dining

Avani One Bedroom Suite

- 2-night consecutive stay in Avani One Bedroom Suite
- Welcome chocolates
- Daily breakfast for two
- Benihana dinner for two with value at THB 2,500
- A bottle of sparkling wine
- Two sunset cocktails
- THB 500 spa voucher per room per stay
- 20% off dining

For more information, please call Avani Pattaya Resort:
038 412120 or email: pattaya@avanihotels.com

218/2-4 M.10 Beach Road, Pattaya 20260 Thailand

AVANIHOTELS.COM







All You Can Eat Seafood

7th - 12th, 16th - 20th April / 6-9pm
@ The Beach Club Restaurant
THB 1,199++/person (food only)

Special Themed INTL Seafood Buffet
Entry to the feast will be THB 1,899 net per person, which includes free-flow of draught beer and soft drinks.

- 13th Seafood & Asian Inspired
- 14th Seafood & Taste of Thailand
- 15th Seafood & Japanese / Korean BBQ



THE BEACH CLUB
PATTAYA

SCAN TO SIGN UP



AND BECOME OUR MEMBER FOR FREE!

Happy Hour On The Beach

Everyday / 2-5pm
@ The Beach Club Bar
Drinks from THB 120 net



Become A Beach Club Member &

Instantly Get a 20% Discount!*

*Terms and conditions apply

Pullman Pattaya Hotel G 445/3 Moo.5 Wongamart / Pattaya / Follow us on @thebeachclubpattaya 038 411 940



PATTAYA: THEPRASIT ROAD

Open to Public

11:00 - 14:00
TUESDAY - SATURDAY



<https://www.vinestovino.com/>
FB @vinestovinothailand
Tel 064 624 4400



**“ Let us be your happy place!
try our speciality coffees,
macarons and pastries.”**



**THE
GEMS
MINING**
Resort Pattaya



Location



Castaway Café Pattaya



038 222 222



The Gems Mining Pool Villas Pattaya



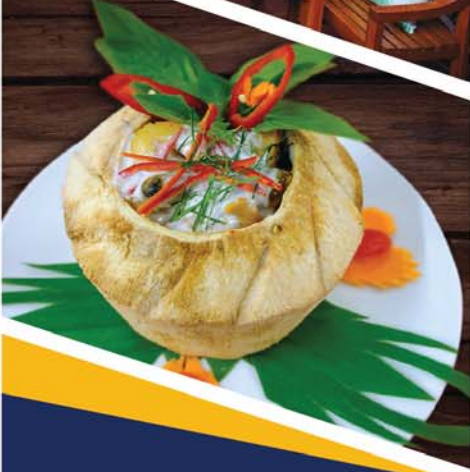
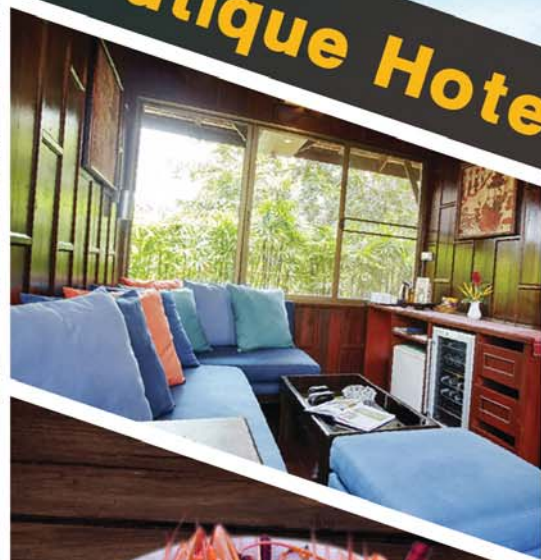
thegempattaya



@thegempattaya

SugarHut
1984

The Original Boutique Hotel Since 1984



**Award Winning
Thai Dishes**



“THE 10TH CULINARY GATHERING OF COOKS & CHEFS”
THE QUEENSIRIKIT NATIONAL CONVENTION CENTER, BANGKOK

Sugar Hut Resort & Restaurant



 sugarhut@sugar-hut.com  [sugarhut1984](https://line.me/tv/p/sugarhut1984)  www.sugarhut-resort.com

 038 251 686-88  391/38 Moo 10 Pattaya Na Jomtien Road, Bang Lamung, Chonburi

NATANS

Thai and French Restaurant

406/333 Jomtien Thappraya Rd
email:natans2008@hotmail.com

Tel: 038 251 250

PICK UP YOUR COPY OF THE MAGAZINE HERE!

บริษัท ฟู้ดแลนด์ซูเปอร์มาร์เก็ต จำกัด



OPEN 24 HOURS



Change Your Spending into
Reward Points
and Many Privileges For
Members Only



USE FOR REDEEMING
PREMIUM GIFTS,
DISCOUNTS AND MANY
OTHER PRIVILEGES

SPECIAL
OFFER
SCAN HERE



PATTAYA-KLANG 0 3836 0171 | PATTAYA-TERMINAL 21 0 3325 2000

THINK OF FOOD THINK OF FOODLAND www.foodland.co.th www.facebook.com/foodland24hours [foodlandsupermarket](https://www.instagram.com/foodlandsupermarket) [@foodland24hours](https://www.tiktok.com/@foodland24hours)

Charansanitwong 0 2411 3333, Patpong 0 2234 4558, Petchaburi 0 2318 2063, Pinklao 0 2446 8080, Hua-Mark 0 2314 6763, Thonglor 0 2390 1188, Raminthra 0 2521 2560, Sukhumvit 5 0 2254 2247, Sukhumvit 16 0 2204 2288, Lardprao 0 2530 0220, The Brio Phutthamonthon Sai 4 0 2116 5678, Laksi 0 2576 0606, The Bright-Rama 2 0 2007 5300, Srinakarin 0 2383 3313, The Street Ratchada 0 2121 1911, Victoria Gardens Phetkasem 0 2021 6789, Porto Chino-Rama 2 0 3411 0840, Terminal 21 Korat 0 4449 8700, Pattaya-Klang 0 3836 0171, Int Intersect Rama 3 0 2682 6212, Terminal 21 Pattaya 0 3325 2000, Att U Park Bangna 0 2117 1028

TASTY PIES MADE ON THE PREMISES

On our menu we have
Steak & Kidney, Steak
& Ale, Mince Beef &
Onion, Chicken & Mushroom



Fruit Pies are Apple,
Cherry, Rhubarb, and
Blueberry served with
Custard.



www.facebook.com/TheSportsmanPattaya www.sportsmanpub.com

FOODMART

OPEN
24 HRS

MORE THAN JUST A SUPERMARKET

Your Local with a Full
Range of Products



OnThappraya Road,
Jomtien 315/3 Moo 12

Tel: 038 303 540 - 038 303 467



RESTAURANT - PIZZERIA

We have 20 Different types of Pizza to choose from

The pizza of May is finally here :

Cream, mozzarella, gorgonzola, mushroom & coppa



SCAN OUR QR CODE TO KEEP UPDATED
WITH ALL OUR PROMOTIONS
306/94 THAPPRAYA ROAD, PATTAYA
TEL +6692 475 1493 FB Marco's @marcospattaya

Also available for Take Away via:



KIDS DAY OUT

By Rodney James Charman

The Rotary Club of Bangkok South, the Pakkred Home for Handicapped Children, plus several other institutions organized a day out at the Royal Varuna Yacht Club in Pattaya. Hundreds of Bangkok South members, friends, members of other clubs, as well as students and teachers from Shrewsbury School volunteered to help these amazing children enjoy the day.

Kids' Day Out is one of the most rewarding and genuinely heart-warming events of the year for everyone involved.





James Lee Valentine Walking from Pattaya to Phuket



James Lee Valentine (AKA "Wild Wolf") is going to do something quite extraordinary. He is going to walk 1000 km from Pattaya to Phuket to raise money and awareness for the Take Care Kids Family Home.

No stranger to charitable causes James has raised money by taking part in the London Marathon, walking from Lands End to John O'Groats, and carrying out a walk in the Philippines to raise money for a friend diagnosed with a brain tumour.

What makes this latest endeavour so taxing is, as we all know right now, the intense heat that James will encounter whilst on his journey. He may also have to watch out for other potential Thai hazards such as snakes, dangerous traffic as well as dust and pollution. His trusty friend Sammy will be following behind to ensure James stays hydrated and supply emergency back up.



You can follow the whole journey via the "Take Care Kids Walk" Facebook page. Also Pattaya Trader - Discover Pattaya Facebook pages will be keeping track and next month we shall give you an update on James' progress.



Take Care Kids Thailand Foundation
บัญชี: มูลนิธิเทคแคร์ คีตส์ ประเทศไทย

Donations can be made to the Take Care Kids Thailand Foundation account at Kasikorn Bank account number 584-2-05272-8 or by using the attached QR Code.

Van Gogh *Alive* the experience



The Van Gogh Alive exhibition will be showing at The Attraction Hall on the 6th floor of IconSiam, Bangkok until the 31st of July 2023. Tickets for this fantastic event start from 990Baht.



Digital exhibitions of this type giving visitors a truly immersive experience are becoming increasingly popular. This one with amazing images from Van Gogh's most famous paintings is now number one with over 8.5 million visitors to date. Before coming to Bangkok it was seen in more than 80 cities worldwide including Beijing, Berlin, Denver, Madrid, Moscow, Rome, Sydney, Frankfurt, Nagoya, and Kuala Lumpur.



Visitors to this amazing collection of Van Gogh's can experience the thrill of a simulation room showcasing his most famous paintings by the use of a kaleidoscope projection on the floor and covering walls over 6 mtrs high.

Masterpieces you can expect to see include Bedroom of Arles, The Starry Night, Café Terrace at Night, Night Coffee and Wheat Field with Crows. There is also accompanying surround sound music to complete this incredibly engaging experience.

For tickets go to:

<https://www.iconsiam.com/en/events&activities/van-gogh-alive-bangkok>

Ticket Prices

- VIP THB 1,490
- General Admission THB 990
- Students THB 480



Regents International Pattaya

Interviewed by James Kemp, Deputy Head of School at The British Learning Centre



**REGENTS
INTERNATIONAL SCHOOL
PATTAYA**

A NORD ANGLIA EDUCATION SCHOOL

Regents International School Pattaya has been a name synonymous with high-quality education since its foundation in 1995. Undoubtedly the region's most established international school, how has Regents modernised to prepare its students for life in an increasingly uncertain future and how has the school sought to distinguish itself from its competitors? I met with the new Principal, Ms. Amos Turner-Wardell, to discuss what she feels Regents offers for its students and families.



To describe Ms. Turner-Wardell as the new Principal is perhaps slightly disingenuous as while she is new to the role, she is certainly a familiar face at Regents. Having joined the school in 2017 as the Head of Secondary, Ms. Turner-Wardell's love for the school is evident in the passion with which she speaks about the opportunities the school offers to their students. When I asked her what she felt made the school stand out, she spoke of its history and how the years have allowed the school to perfect its policies and procedures, and that this provides stability and surety for their students, parents and staff. She also mentioned that this ensures that 'Regents is a strong, supportive, welcoming community as an inclusive school.'

Wellbeing is an area that sits close to Ms. Turner-Wardell's heart, and was a priority when she became Principal. Of course, Regents had strong safeguarding policies in place prior to her appointment, but considering student wellbeing to be a central pillar of the school's ethos would seem to be a driving motivation behind her approach. 'Happy students are better learners,' she commented, 'research shows that students who feel safe and happy at school will thrive and get the best outcomes, not only academically but they will be able to cope with the challenges in life.' Being a Round Square school for over 20 years has meant that Regents places a focus on public service and character development. The Round Square is an international organisation that seeks to encourage students to take part in a range of community service activities both locally and internationally.

A tradition of strong academic standards is also a cornerstone at Regents. Ms. Turner-Wardell was keen to mention that in recent years the school had improved upon its already impressive results with 58% of their students achieving A-A* at iGCSE and an average IB score of 36 - up from an already impressive 31. Regents offer International Baccalaureate, British International GCSEs and A Levels, a combination that I have not come across in my career and a unique selling point of the school, in the area.

For many years, Regents stood alone in offering high quality international education in the region, however, this is no longer the case. With Rugby School Thailand's unparalleled campus, St. Andrews Green Valley holding a much coveted Gold Level accreditation with the Education Development Trust and Singapore International School Bangkok's Rayong campus opening in August of this year, how does Ms. Turner-Wardell see Regents' future in this new, competitive landscape?

I was encouraged to hear that she sees the increase in international schools as a positive, not only as it pushes all schools to maintain high standards but also as it provides parents with a plethora of choices for their children. Having spoken with Ms. Turner-Wardell about her time in teaching and educational leadership, where she worked to mentor support struggling schools, I had a sense that the development and happiness of her students is paramount - I must say that this is refreshing to see in a school of Regents' size and can all too often be lost in a drive for results.



During my career here in Thailand, I have visited Regents on many occasions but I have never had the opportunity to learn more about the school's values and history. Now that I have, and having recently visited other prominent international schools in the area, I feel very positive that parents have a great range of providers to choose from. As I mentioned in my last article, prices are very much at a premium and rising for the top schools and, despite the stiff competition, this does not seem to be a trend that is changing and may mean that the top-tier schools remain out of reach for many expats. As such, it will be for the schools to demonstrate their value to parents; this something that Ms. Turner-Wardell is acutely aware of and keen to do.



REGENTS INTERNATIONAL SCHOOL
PATTAYA

A NORD ANGLIA EDUCATION SCHOOL

CREATE YOUR FUTURE

At a Nord Anglia school, we'll help your child develop the knowledge, creativity and resilience they'll need to succeed - whatever they choose to be or do in life.

Find out how your child can make their mark on the world and how we'll make every moment of their education count.

Contact Admissions@regents-pattaya.co.th

www.regents-pattaya.co.th



NORD ANGLIA
INTERNATIONAL
DUBLIN

Investing in the Future: The Cost-Effective Case for Additional Tuition

By James Kemp, Deputy Head of School at The British Learning Centre

Good education is essential for success in life and can have a significant impact on an individual's future prospects. However, not all children have access to the same quality of education, and this can result in unequal outcomes. One solution to this problem is the provision of additional tuition for school children, and recent academic studies suggest that this could be an effective way to improve educational outcomes.



Firstly, it is important to note that additional tuition does not mean that schools are failing. Instead, it is an acknowledgement that some children may benefit from additional support and guidance to help them reach their full potential. In fact, research has shown that students who receive additional tuition tend to perform better academically than those who do not.

One study conducted by the Education Endowment Foundation found that students who received additional tuition in maths made an average of three months more progress than their peers who did not receive additional tuition. The study also found that the benefits of additional tuition were particularly significant for disadvantaged students, who tend to have lower levels of academic attainment. This suggests that additional tuition could help to address the issue of educational inequality, which is a major concern in the UK.



Another study conducted by the University of Sussex found that students who received additional tuition in English as a second language (ESL) made significant improvements in their language skills. The study found that students who received additional tuition improved their reading and writing skills by an average of 15%, compared to just 4% for those who did not receive additional tuition. This suggests that additional tuition could be particularly beneficial for students who are learning English as a second language, who may struggle to keep up with their peers in the classroom.

Furthermore, additional tuition can also provide benefits beyond academic achievement. A study conducted by the National Bureau of Economic Research found that students who received additional tuition were more likely to attend university and to earn higher salaries in later life. This suggests that additional tuition could have a positive impact on a student's long-term prospects and could help to break the cycle of poverty that can be associated with low levels of educational attainment.

It is also worth noting that additional tuition does not have to be expensive or time-consuming. There are a variety of different approaches that can be taken, ranging from after-school clubs to online tutoring. Some schools may also be able to provide additional tuition during the school day, using existing staff members or volunteers.

Of course, it is important to ensure that any additional tuition provided is of high quality and is tailored to the individual needs of each student. This may require additional training for teachers or the use of external providers who specialise in additional tuition. However, with the right approach, it is possible to provide high-quality additional tuition that is both effective and cost-effective.

In conclusion, additional tuition can be an effective way to improve educational outcomes, particularly for disadvantaged students. Research has shown that students who receive additional tuition tend to perform better academically, and that the benefits of additional tuition can extend beyond academic achievement to include long-term benefits such as increased earnings and improved life chances. While providing additional tuition does come at a cost, research suggests that it can be cost-effective in the long term, and there are a variety of different approaches that can be taken



+66 84 090 5572 (Thai) + 66 95 573 5638 (English)
79/17 Padtanakan 1, Moo 13 Nongprue, Banglamung, Chonburi 20150
info@britishlearningcentre.com britishlearningcentre.com

**Be adventurous.
Be brilliant.
Be happy.**



Visit our spacious
campus today

☎ 038 030 611

✉ greenvalley@standrews-schools.com

🌐 www.standrewsgreenvalley.com



St. Andrews
International School
Green Valley

Easy ABC

Language School Pattaya
since 2008

Education Visa

Live in Thailand
with an **ED - Visa**
while studying
with us

For all ages and classes



Owner & Founder: Wolfgang Payer
Easy ABC Language School



Our Courses

Thai, German, Russian,
English, and Computer courses
are tailor made to give YOU
the best possible experience

Also available as
Group, Private, and
Online **LIVE** Classes



International staff available at all times

About Easy ABC
The winner of the **ASEAN Awards 2016**, a leading and reliable source of education in Pattaya

Other available courses also include German A1 - B2 and Computer Graphic lessons



www.easy-abc-th.com

+66 (0)38 251 952

+66 (0)89 881 9873

391/127 Thappraya Road Soi 11
Nongprue, Banglamung, Chonburi





Odyssey Learning Centre More Than Just Knowledge Gatherers

Delivering a broad and balanced holistic education programme that nurtures the growth of strong and confident children aged 4 to 13.

Full time and part time options available



**50% off enrollment with
the code 'Discover'**

Email: admin@odysseylearningcentre.org

Tel: +66 6245 12481

Horseshoe Point 100 Moo 9, Pong
Banglamung Chonburi

OPTICIANS AND TREATMENT IN THAILAND

If you're looking for some new eyewear, then Thailand gives you a wide choice of outlets to go to. At the last count there were over 15,000 nationwide stores to choose from including individual shops and chain stores. There are however, only just over 1,500 qualified opticians, most of whom are business owners and can conduct eye tests, sell frames and lenses including contact lenses, and do frame repairs from their own premises.

There is a rising demand for eye care in Thailand, principally driven by the kingdom leading the way in mobile internet use with people spending a near five hours per day using their devices. This is leading to an increase in Myopia, or nearsightedness, and Presbyopia, which makes it difficult for middle aged and older patients to see things up close.

Of course, being Thailand, the fashion and luxury market takes up 25% of the total sales here but that still leaves a lot of people looking for prescription lenses and updated eye tests. Pattaya has dozens of retail eyewear outlets but the qualified opticians are harder to find. We here at Discover Pattaya have a few regular customers for glasses and lenses and have been using Asian Optical, who are located on Pratumnak Soi 4, for many years now. We would not hesitate to recommend them to anyone needing a proper eye test and an update on their current prescription.



Of course you cannot give recommendations lightly for something as serious as your eyesight and it is only after many years of good service, on both prescription glasses and contact lenses, that we would do so.

They have an excellent choice of frames and lenses, and if after your eye test you need a different prescription the new lenses can be ordered in for you to be collected when ready.

As mentioned earlier, whether old or young, the explosion in use of the internet, whether on desktop, tablet or mobile is putting a strain on our eyesight like never before. It is the recommendation of the experts that you get your eyes tested every 12-18 months and if you feel that it may be time for you to do so, Asian Optical could be the answer. Wherever you decide to go though, it may well be time to check to see if the prescription you are currently using is still the best option for you. Make sure you go to a qualified optician to do so.

Asian Optical are on Pratumnak Soi 4, about 150 metres on the left coming down from Pratumnak Hill, next to the 7/11. You can also ring 091 749 9965 or 081 001 0418 to book an appointment.





DR. OLIVIER CLINIC

English, Deutsch, Français, Thai



Think of Wellness... Think of Dr. Olivier Clinic

- + GENERAL MEDICINE
- + ANTI-AGING
- + CHECK-UP
- + VITAMINS + MINERALS
Infusion
- + FOOD SUPPLEMENTS
- + NAD+ (IV DRIP)

Open: Monday-Friday 9-15 hrs
www.dr-olivier-clinic.com



Tel. 038 303 331 Line: drolivier E-mail: info@dr-olivier-clinic.com



ASIAN OPTICAL

When did you last have your eyes tested?



Like regular trips to the dentist having your eye tested is something we often forget to do and yet we should get them checked at least once a year.

There are many opticians in Pattaya and quite often on our Facebook sites Pattaya Trader - Discover Pattaya and Pattaya Trader Expat Ladies Group we are asked to give recommendations. Asian Optical on Pratumnak Soi 4 is the only one we recommend. This is because unlike some other opticians that are little more than shops selling glasses in Pattaya Asian Optical can give you a proper eye test and they also have a fantastic selection of frames, lenses and contact lenses.



Contact Khun Charn for an appointment
091 7499965 and remember that if you wear
contact lenses you need to take them out at least 3
hours before you are due to take your test.
FB Asian Optical email V_impress@hotmail.com
Soi 4, Pratumnak, Pattaya, Chon Buri
Telephone 081 001 0418

TD BLUE SAFARI LEADS THE WAY IN MANTA RAY CONSERVATION

By Kanchan Nath

Blue Safari Seychelles is now taking its unique signature snorkelling experience to a new level – all in the name of science. One of the most magical encounters for travellers to the outer islands is with Mantas and guests learn all about the key conservation project from the on-site marine biologist before heading out to swim with these enigmatic rays. The project prior to 2022 has relied on photo-ID but a major new development has been acoustically tagging 20 Mantas and taking genetic samples from 25 of the gliding giants, all to protect this fragile species.



After three years of planning and collaboration with partners from around the world, and two and a half years of fundraising, the project is coming to fruition. Its aims are:

- To investigate the spatial ecology of the reef Manta Rays around the Alphonse group of atolls, using the 68 underwater receivers situated around the outer reefs and inner lagoons which will detect the high-frequency pings emitted by the tags on the Mantas as they swim past.
- To look at how the Mantas are inhabiting the atolls, the acoustic data will be overlaid with tidal and weather data to look at the conditions that affect their movements.
- To look at what factors influence their movement patterns and residency times around the atolls at different stages of life in male and female Mantas; their primary critical habitats will be identified which will help influence local conservation management decisions.
- To track Mantas tagged on Alphonse as they show up on the receiver array at D'Arros, St Josephs, and some other northern Amirante islands such as Poivre. This will give definitive data on how often these Mantas travel around the Amirante chain and use different habitats, a mystery until now!
- To contribute genetic samples to an Indian Ocean-wide genetic study looking at connectivity throughout the region, again with significant international conservation implications for Mantas.
- Inspirational encounters with the world's largest ray are one of the most compelling and unforgettable delights of joining Blue Safari Seychelles on the journey of a lifetime. Its conservation team is dedicated to offering guests a chance to not only swim with the incredible Mantas in the water but also give an immersive experience learning about how to identify them through the unique spot patterns on their bellies and observe how they feed using their iconic horn-shaped fins.

This most recent development sits within the national Seychelles Manta Ray Project (SMRP) which Blue Safari are a key partner of in collaboration with The Manta Trust, Save Our Seas Foundation, and other partners. Dr Lauren Peel oversees the SMRP and expert tagger, Luke Gordon, who is head of Manta Trust Fiji, flew out to assist Blue Safari Seychelles with its exciting three weeks of fieldwork and train the team on the ground in tagging and sampling techniques. The acoustic tags are about the size of a cigar and sit outside the Manta; a tagging pole injects a skin anchor into the muscle tissue of the Manta and a strong thread connects that to the outside tag.



Anyone swimming alongside the Alphonse Mantas for the next few months can spot the tags immediately as they have been painted with bright blue anti-foul paint. The genetic samples have been collected using the same pole but instead of inserting a tag, the tip extracts a tiny piece of tissue; in all 23 different Mantas have been sampled and Blue Safari Seychelles has taken care not to sample and tag the same Manta, to minimise stress.

The new Manta Acoustic Tagging project has been 100 percent funded by guest donations, without which it would not have been possible. The next download of data from the receivers will be in February when preliminary analysis will show which Mantas have stayed around and what they have been up to.

The project has a planned three-year timeline after which all the data will be fully analysed, reports and papers compiled, and increased conservation management put in place. The results of the project will be highly valuable for the protection of poorly studied Manta populations in other small island states where pressures on these creatures may be higher.

Globally Manta Rays are facing significant threats; at least 15,000 Mobulid Rays are caught by the global tuna fishery alone every year as by-catch and a further 150,000 are killed for their gills which are used in Chinese traditional medicine. Both species are listed on the IUCN Redlist and on the CITES appendices but there is still a considerable illegal trade in their gills, as Mantas are incredibly slow to reproduce and their populations have decreased more than 30% in the last 25 years, the need to protect these remote, untouched populations has never been greater.

MORE THAN A PARTY BOAT



Jeanneau, Sunseeker, Sunreef and Swan are among a diverse range of builders who have recently entered the luxury day boat market, which has grown rapidly in the Med and Florida. But will such boats also prove popular in Asia?

With over 250,000 boats worldwide, Jeanneau has a client database that most other builders can only dream about. Its new DB Yachts range of day boats started with the DB/43 last year and has been bolstered by the DB/37 that debuted at Boot Dusseldorf in January.

Day boats are nothing new but the luxury or premium day boat open designs with large aft decks dedicated to social entertaining has risen dramatically in recent years. "For us, the clear trend in the market is that people are increasingly using their boats as day boats, whatever the size, whatever their budgets," says Blanc, who spent 16 years in Asia including 10 as Jeanneau's Asia-Pacific Sales Director. "People want a big entertainment platform with a lot of space. They go out to an island for the day, they go there fast, they go there in style, and then they come back. That really is the trend."

With luxury day boats often seen as party platforms for groups of friends enjoying the summer season Sunseeker is also among the major brands entering the luxury day boat segment. Sean Robertson, Sunseeker's long-serving Sales & Marketing Director, says: "At this size range, the luxury day boat is the biggest growth sector."

Day boats have changed and they're attracting everybody from existing owners coming up through the range to people new to boating. They've almost become watersports platforms. Whether you're swimming, wakeboarding, with family or a group of friends, its primary use is as a watersports base."

The market is even attracting catamaran and sailing yacht builders such as Sunreef renowned for its increasingly large and luxurious flybridge sailing and power catamarans, as well as its new Eco range of solar-electric versions. Even Swan, one of the world's most famous sailing yacht builders, moved into the open-day boat sector by launching its first-ever motor yacht, the 43ft Shadow, in 2021.

In contrast to the Med and Florida, the market in Asia has long shown a preference for flybridge models with extensive air-conditioned indoor areas. Swan Shadow and other open-day boats can make headway in this region with an air-conditioning system that can be set up in the cockpit if requested.

By Claire Lim
Edited Article republished by kind permission of

YACHT
style



OCEAN YACHTING

"The Real Yachting Experience"

Join Tours & Charter

Pattaya

Private Charter
Design your own dream with the most
pleasurable experience in Pattaya

Contact:
082-219-8666 Eng\Thai
061-387-1866 Thai\Cn
For more information visit
www.oceanyachting-th.com



It was an emotional victory for Rahm, who is driven by the history of the game and knows what a massive part of that history Seve represents. He was joined in his celebrations on the final green by Jose Maria Olazabal, a two time winner himself and Rahm's mentor as he was coming through the ranks, and a disciple of the great Seve himself in his younger days.

Other than the winner the biggest story of the week was the remarkable showing of 52 year old Phil Mickelson, who finished the round with a barrage of birdies, the final one of which lifted him into the clubhouse lead until Rahm came in.



Phil Mickelson

His round of 65 was enough to get him a joint second place finish with Keopka and make him the oldest player in Masters history to finish in the top five. In fact the LIV Golf defectors showed up remarkably well after the doubts about how well prepared they might be.

Alongside Keopka and Mickelson, Patrick Reed finished with a 68, hoisting him into joint 4th and giving three of the top six places to LIV, a result that would have pleased Greg Norman no end!

Disappointment of the week was undoubtedly Rory McIlroy, who missed the halfway cut. The weight of expectation seems to hang heavier on his shoulders every year he returns and with the strength of the younger competition nowadays, it is going to get more and more difficult to break the hoodoo.

The weather made it a strangely muted and disjointed start to the tournament but thanks to some excellent organization, Augusta burst into life on Sunday. Let's hope for better weather at the Open!

PATTAYA SPORTS CLUB

2 DAYS

CLUB CHAMPIONSHIP 2023

AT PATTAYA COUNTRY CLUB.

Individual Stableford + Stroke play division optional.

May 8th Tee time start 8.16 am.
May 10th Shotgun start 12.30 pm.

Green Fee + Caddy + Cart + Buffett
3,650 THB All in.
plus
300 THB Competition fee.

Presentation at the conclusion of play on May 10th with a Buffett & Prizes.

Limited to first 100 members.

Sign up at the PSC office. Tel.038 415 424, 09 5706 2646 | Email: info@pattayasports.org.



VEHICLE HIRE-PURCHASE AND LEASING AND ITS IMPACT ON CONSUMER DEBT

The Thai government agreed in March to allow the Bank of Thailand to regulate the business sector which relates to the hire-purchase and leasing of cars and motorbikes after examining its impact on household debt.

Even during the pandemic the buying of vehicles expanded by an average of over 5% year on year and the last recorded figures from the end of 2021 show that a total of 1.8 trillion baht was outstanding, accounting for some 12.5% of total consumer debt.

The total household debt from the last available figures at the end of 2021 was some 14.5 trillion baht, or around 90% of GDP. The stricter regulations are expected to come into force in June this year.

The chief sales and marketing officer of Thai-Honda, the biggest company in the sector with some 70% of the market share, is confident that the company can absorb the impact of the new regulations and although the details of the decree are unclear at the moment, he believes that "the government will eventually find a balance between measures to protect consumers and support business".

HARLEY DAVIDSONS LATEST MACHINE

To celebrate its 120th anniversary, Harley Davidson unveiled its new 2023 Road Glide at the recent car and motorcycle show in Bangkok. If, like me, you spend most of your time running around town on a motorbike which is around the 125cc mark you probably wouldn't be interested in actually purchasing this bike, much less understand the technical details, but what cannot be denied is what a beautiful piece of machinery it is. It is apparently being produced as an extremely limited edition and was premiered at this years expo as the most expensive bike on show at a shade over 4 million baht.





MERCEDES SEEKING BUSINESS PARTNERS IN THE KINGDOM

Martin Schwenk, chief executive of Mercedes Benz Thailand, is hoping to capture the lions share of the EV (electric vehicle) market here and is looking for local business partners for joint ventures. The aim is to set up EV charging facilities nationwide to keep up with the growing domestic EV market. After a package of incentives were approved by the Thai government last year, Mr Schwenk stated that “the company will increase its investment in Thailand, with the aim of being the leading EV manufacturer in the country”.

Total sales of all Mercedes in Thailand went up by over 34% in 2022, representing the sale of over 13,000 vehicles, whilst its total sales world wide was a shade over 2 million, a staggering figure considering the world was emerging from the pandemic. Of course the progress of the EV will depend on the infrastructure here and whether the Kingdom can not only open enough charging stations but keep them to the high level of maintenance required. We shall see.

EQS



MAY SPORTS UPDATE

By Steve Wade.

There's plenty happening in May so let's start with the conclusion of the Premier League. We have a full schedule of match days throughout the month with the final matches being played on the 28th. As for much of the season it looks like a match up for the title between Manchester City and Arsenal and with City having seemingly the slightly easier run in, the race could go right to the wire.



The Champions League semi-finals are being played in May with the final going ahead on the 12th of the following month. With the quarter finals just about to go ahead at time of writing, Manchester City are favourites but they have a severe test to overcome in the shape of Bayern Munich in the quarters and it is Italy who have the most teams representing them in the latter stages, including Napoli, who are running away with Serie A this year and are second favourites behind City.

It's a terrific month for followers of Formula 1 with three of the most iconic races of the season scheduled for the grid. Miami starts us off on the weekend commencing the 5th, that's followed by the Italian Grand Prix on the 19th and then on to Monaco, which goes ahead on the 26th. A fantastic line up for F1 fans.

The PGA golf tour is in full swing and the second major of the year, the PGA Championship, is being played between the 18th and the 21st of the month at the Oak Hill Country Club East, which the great Tiger Woods called "the toughest, fairest course he's ever played". It will be a stern test for even the very best and looks like a great watch for golf fans.



At the end of the month starting the 28th the second grand slam tennis tournament of the year, the French Open, takes place at the famous Roland Garros stadium in Paris. Incredibly, Rafael Nadal has won this event 14 times since 2005 and if fit will surely try for one last hurrah at a venue that he has made his own. If he doesn't make it at least it will give somebody else a chance!

That's it for May and what a fantastic line up it is. Whatever you love to watch, why not support our local businesses here in Pattaya by getting out to one of the hundreds of venues who show live sports and have a few cold ones to go along with it. There's nothing like it.



Inspire Market Loyalty Through Quality Facilities

With the Best in Materials, Planning, Build Quality and Reliability



Planning, Building & Supplying Asia's Recreational Infrastructure

Seara specializes in the planning, supply, installation and service of quality recreation, health and leisure facilities at commercial and residential property developments, private clubs, hotels and resorts. Let Seara turn any space into a market-leading facility.



www.searasports.com

info@searasports.com

tel: 038 231 376

Bangkok Phuket Pattaya Samui Hua Hin Ho Chi Minh City Hanoi Phnom Penh Yangon Mandalay Dhaka Malé

BORDER RUNS TO CAMBODIA



In the past I had taken many of my customers on visa runs with a minibus but when COVID-19 hit, everything changed and borders were closed for a long time with no more daily border run crossings available. Now the border to Cambodia is open again for visa runs and other business trips.

So I decided to do private runs with only 3 people per car and it works well. It is comfortable, relaxed, fast, and not too tiring so you don't come back exhausted after the trip.

Our driver is a professional driver who speaks both English and German and I help with all the necessary paperwork. Customers can book to go on a daily run. We leave Pattaya at 7 am and return between 3.30 pm to 4.30 pm. We usually stop at McDonald's for lunch on the way back to Pattaya.

KAREN SERVICES
VISA AND PROPERTY
TEL: +66 87 941 3986
Theprasit Road Soi 7



For more informations, you can visit me at Karen Services Office or call 087 941 3986 or email: karenserviceandproperty@gmail.com or karenservicesthailand@gmail.com

TAX CORNER

How to run a Business in Thailand

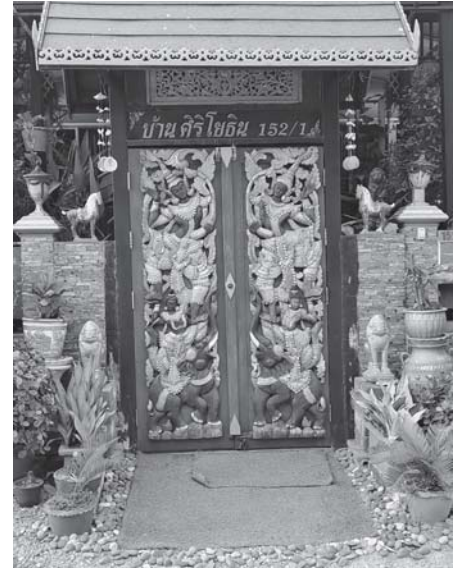


After last month's introduction of Thai Law about how to run a business in Thailand, we are now going to start with the corporate establishment.

First, you need to understand that there are two kinds of corporations that are limited companies. Now any limited company must have at least 2 shareholders (previously 3 were required, and, before that 7 shareholders). If all shareholders are foreigners or foreigners have shares of more than 49% of the total, the enterprise will be regarded as a Foreign Company which has restrictions in doing all businesses that are reserved for Thais. For example property/real estate businesses, broker/dealers, beauty salons/ massage parlours, textile, engineering/architecture etc.

In order to be qualified as a Thai Company, the shareholders must be Thais and Foreigners in the proportion of 51:49. Additionally, the company should appoint a Thai authorised director in conjunction with the foreigner for security reasons.

In the next chapter, we will talk about the related taxation and employment of staff in a Thai company.



Siriyothin Accounting & Law Office

- Bookkeeping
- Financial Report Auditing
- Taxation
- Company Establishing
& Registration

IF YOU NEED HELP WITH YOUR ACCOUNTS
CONTACT ME ON

Tel.080-4432899

Email: sampattaya2020@gmail.com

152/1 m12 Jomtien Beach Road Soi 1 Pattaya





AMA FASHION PATTAYA

Bespoke Tailor

อานาแฟชั่น

AMA FASHION



VISIT OUR BEAUTIFUL STORE ON PATTAYA KLANG

+ (66) 38 361 861, 084 137 7783

✉ chris-thailand@hotmail.com 🌐 www.ama-fashion.com



HOME LOAN MADE EASY

FAST APPROVAL
WITHIN 7 DAYS

COMPETITIVE
INTEREST RATE



CONTACT US NOW **038 373 735**

www.magnacarta.co.th

We can help you in the approval of a **LOAN APPLICATION SECURED AGAINST YOUR PROPERTY** in Thailand.



WE ACCEPT HOUSE, CONDO, OR LAND



NO CREDIT CHECKS OR BLACK MARKS



HOME MORTGAGE LOAN IS AVAILABLE

IMPORTANT REASONS WHY YOU SHOULD HAVE A LAST WILL AND TESTAMENT

By: Magna Carta Law Firm

By creating a Last Will and Testament, you can make sure that your estate is managed according to your preference. If you have substantial assets in Thailand and haven't made a will yet, you should be aware that there are many reasons why you should consider having one right now.

YOU CAN CHOOSE A TRUSTED PERSON TO HANDLE YOUR ESTATE, MAKING IT EASIER FOR YOUR LOVED ONES.

The choice of a dependable executor is one that should be well thought through. By designating an Executor, you choose who will be in charge of ensuring that the instructions included in your Will are carried out. An executor's duties include ensuring all assets are identified, all debts and taxes are settled, and that the residual assets are properly distributed to the beneficiaries in accordance with your will. Also, having a will can also make the probate process smoother for your loved ones.

YOU CAN DESIGNATE WHO SHALL INHERIT AND CONTROL YOUR ESTATE ACCORDING TO YOUR WISHES.

A Last Will and Testament details your assets in Thailand. You have the opportunity to select who will receive what from your estate. This will prevent unnecessary complications and quarrels between family members.

WHEN YOU DIE WITHOUT A WILL, YOUR ASSETS WILL BE DISTRIBUTED ACCORDING TO THE LAW.

When a person passes away in Thailand without leaving a Last Will and Testament, their assets are divided in accordance with the law. In Thailand, there are six categories of statutory heirs, and each category is entitled to inherit

in the following order: descendants, parents, full-blooded brothers and sisters, half-blooded brothers and sisters, grandparents and great-grandparents, uncles and aunts. The right of a surviving spouse to share in the estate of a deceased spouse arises automatically from marital status. Separated spouses retain their ability to inherit from one another as long as their divorce has not yet been legally granted. Ordinances awarding such rights of a surviving spouse make the spouse a statutory heir. Half of the estate (Sin Somros) will belong to the spouse, if any, before any distribution of the estate to the relatives, and the remaining portion will be allocated as appropriate.

A WILL CAN HELP TO ENSURE THAT SPECIFIC PEOPLE DO NOT INHERIT ANYTHING.

You may not know that you can utilize a will to make sure that some people don't receive anything.

YOU CAN GUIDE YOUR LOVED ONES TO YOUR FINAL RESTING PLACE.

Another significant part of estate planning is specifying final disposition preferences for your remains. You can provide instructions to your executors and loved ones regarding your requests for your final resting place.

YOU AND YOUR LOVED ONES GAIN PEACE OF MIND.

Without a will, the court will decide how to distribute your assets and property, which might not reflect your particular preferences. By creating a will, you may avoid this uncertainty and gain control over how your assets are distributed. This will give you and your loved one's peace of mind.



MAGNA CARTA LAW FIRM

www.magnacarta.co.th

- > LEGAL SERVICES
- > ACCOUNTING SERVICES
- > LOAN ASSISTANCE
- > COMPANY FORMATION
- > DUE DILIGENCE
- > VISA & WORK PERMIT
- > NOTARY SERVICES

- info@magnacarta.co.th
- MagnaCartaLawFirmPattaya
- magnacartalawfirm
- Magna Carta Law Firm



What's on The Small Screen



The Marvelous Mrs. Maisel: Season 5

50's housewife Mrs. Maisel continues pursuing her career as a stand-up comedian



Fubar: Season 1

On the brink of retirement, a CIA agent uncovers a family secret and returns to the field for one last mission.



The Great: Season 3

Experience a wild, anti-historical journey through 18th-century Russia, as Catherine the Nothing rises to become Catherine the Great.



Star Wars: Visions Season 2

The "Star Wars" universe reimaged through the distinctive viewpoints of seven Japanese animation studios.



Silo: Season 1

Set in a bleak and contaminated future, a society resides in a colossal subterranean silo that extends down hundreds of stories.



Queen Charlotte: A Bridgerton Story: Season 1

As the young queen ascends to eminence and authority, her union with King George paves the way for a magnificent love story.



What's on The Big Screen



The Little Mermaid

Halle Bailey, Jonah Hauer-King, Melissa McCarthy, Javier Bardem

Ariel the spirited young mermaid longs to find out about the world that lies beyond the sea.



About my father

Robert De Niro, Kim Cattrall, Leslie Bibb, Anders Holm.

Sebastian and his old-school Italian immigrant father spend the weekend with a wealthy and eccentric family.



Big George Foreman

Khris Davis, Sullivan Jones, Deion Smith, Sonja Sohn, Forest Whitaker
The remarkable life story of world heavyweight champion boxer George Forman.



Fast and Furious X

Vin Diesel, Jason Momoa, Alan Ritchson, Brie Larson, Tyrese Gibson

A terrifying threat emerges from the past to confront Dom Toretto and his family.



Guardians of the Galaxy Vol 3

Chris Pratt, Zoe Saldana, Dave Bautista, Vin Diesel, Bradley Cooper

Peter Quill still mourning the loss of Gamora has to once again defend the universe with his team.



Don't go below

Alya Browne, Alice Parkinson, Darius Williams, Gabrielle Chan.
12-year-old Peter and his Sister are taken to the underground kingdom of the pangolins

Torras Coolify Portable Neck Air Conditioner Fan

The Torras Coolify Portable Neck Air Conditioner fan is a lightweight and ergonomic device that fits comfortably around your neck, delivering a refreshing and cool breeze on the go. With advanced air cooling technology and three speed settings, it provides up to 6 hours of cool air. USB rechargeable and easy to carry, stay cool and comfortable wherever you go with Torras Coolify.



HyperKewl Cooling Sport Vest

The TechNiche International Adult HyperKewl Cooling Sport Vest uses advanced HyperKewl technology to keep you cool and comfortable for up to 10 hours during outdoor activities. Simply soak in water and wear for a customized fit with an adjustable waist and high collar. Stay cool and active with the TechNiche International Adult HyperKewl Cooling Sport Vest.

Dyson Pure Cool Tower Advanced Technology Air

The Dyson Pure Cool Tower is an advanced air purifier fan that captures 99.97% of allergens and pollutants. It features a bladeless design, oscillating feature, and real-time air quality display. Control it with the Dyson Link app or the included remote control. Enjoy a cool and healthy environment with the Dyson Pure Cool Tower.



BEAT THE HEAT



evaCHILL Portable Air Cooler

The evaCHILL Portable Air Cooler is a compact and lightweight cooler that uses unique evaporation technology to cool and humidify the air. It features a removable water tank, low noise level, and USB-powered convenience. With a modern design and four color options, it's the perfect way to stay cool and comfortable this summer.



In Thailand, like many countries throughout the world, animals are abused and exploited for profit and human gratification. Thai wildlife is at constant risk from threats including destruction of habitats, the unethical wildlife tourism industry, and the illegal wildlife trade. Since 2001 Wildlife Friends Foundation Thailand (WFFT) has campaigned and fought against these practices to help protect and preserve Thailand's wildlife.

WFFT was founded in 2001 by Edwin Wiek with the help of the local people from Phetchaburi Province. These included the Abbot of the local temple Wat Khao Look Chang, who loaned a large piece of land to the foundation to house some of their rescue animals. It is now one of South East Asia's largest animal sanctuaries where they care for over 700 animals. Their 200 acres of forested land includes an onsite wildlife hospital as the sanctuary rescues and rehabilitates captive or injured wild animals. Those that cannot safely be returned to the wild are then given a forever home as WFFT provides sanctuary to over 50 species of animals, including elephants, tigers, and over 300 primates.



I Love Phants Lodge is the ideal place to stay whether you are a single traveler or a group. It has wonderful accommodation overlooking forest and ponds to spot Elephants roaming free.



The foundation also campaigns to tackle the exploitation and abuse of Thailand's wildlife, and educates tourists and local communities on the urgent issues facing these animals today, like the illegal wildlife trade and unethical wildlife tourism. As they are a non-governmental organisation the foundation receives no government funding, and therefore relies on the generosity of their supporters and donors.



Wildlife Friends of Thailand
108 Moo 6, Tambon Thamairuak, Amphoe Thayang,
76130 Phetchaburi,
Telephone 032-706906 Email info@wfft.org
For more information, to volunteer or make a
donation go to <https://www.wfft.org>

A Music Beach Party - Barry Upton

As you read this in May 2023, my new video album of fifteen songs 'Barry's Sexy Bikini Beach Party' should already be completed and uploaded to my dedicated YouTube music channel FAB BAZ MUSIC TV. Before I had completed my last album and video, 'Barry's Tropical Beach Café', I was already thinking about and dreaming up my next music related project, but, as always, with a difference.



In the past few years, I've always concentrated on recording and making videos for my own compositions, producing around six albums of original material. My usual thought is always to make the next album different to the last so I was imagining a fun beach party here in Pattaya playing with some musician friends and having a bunch of other friends dancing around at a local beach club. Having recently purchased yet another guitar, a beautiful blue Gretsch, I wanted to feature it on the recordings and the resulting videos.



The big departure from my previous albums was that I decided to do nothing but covers of songs that excited me in some way or another and try to add a touch of myself to them. Some songs benefitted from a serious overhaul more than others but the final sound was most definitely personal. Choosing songs was very difficult as I have so many favourites but in true pro entertainer style, I settled on titles that would be crowd pleasing as much as they were self satisfying. Also, the fact that it was to be a happy beach party ruled out some choices.

After settling on around twelve titles, during the recording process, three more got added which is the norm for me, never sticking to the original plan completely. Because of various interruptions to my producing schedule, such as the 'Summer Of 69', '5678 Tropicale' and 'Coco Zhu' releases, it took a few months to finally get the audio ready for filming but I would leave the final mixing and mastering to after editing the videos.

So, to the actual beach party and a lot of texting and organizing friends, musicians, camera crew, venue, etc., to get all and sundry together for one special day of filming. I met with my friend Raymond Lewin who has been a top commercials film director in France and together we checked out a venue I'd recently stumbled across in Naklua, Pattaya, called Bamboo Beach. After getting permission from the owner to film, we set a date for filming together with a strategy.

As expected, madness ensued with bikini clad girls and funster friends dancing on the beach plus enjoying a cocktail or two while I sung and fronted a band with some of Pattaya's top celebrity musicians. Nearly all the songs were filmed in one take to achieve the spontaneity and reality of a proper music beach party.

After a few weeks of editing the footage myself, the results are up and available to see, for free, on YouTube at the aforementioned FAB BAZ MUSIC TV channel.

Entertainment is in my blood, so I really hope there's something for everyone to enjoy with this latest batch of songs. I've already settled on plans for my next original composition which, once again, will be very different from past output, maybe groundbreaking. In the meantime, experience the fun of a fab sexy bikini beach party wherever in the world you are watching. Check out YouTube - FAB BAZ MUSIC TV - Barry's Sexy Bikini Beach Party.



CROSS WORD MAY 2023

Across

1. Strip of leather
6. Fibbed
10. Golf stroke
14. Not restrained
15. Having the means to do something
16. Succulent plant
17. Broadcasting live
18. Female opera star
19. Stringed instrument
20. Court game
22. Withered
24. Operated
25. Scintilla
27. London cathedral
29. Lead an orchestra
32. Belonging to him
33. Remuneration
34. Average
36. Coarse cotton fabric
40. Make a mistake
41. Ostler
43. Misfire
44. Type of tree
47. Music symbol
48. Sheep pen
49. Paddle
51. Unforseen difficulty
53. Tool
57. Vascular plant
58. Rotating disc
59. Possessed knowledge
61. Rationality
65. Gem
67. Profound
69. Rock
70. Small island
71. Always
72. Approximately in or at
73. Encounter
74. Make anew
75. Composition for eight instruments

Down

1. Coin aperture
2. Tincture
3. Type of horse
4. Vacuous
5. Full stop
6. Man or boy
7. Wading bird
8. Fairies
9. Severe shortage
10. Friend
11. Ayer's Rock
12. Sum
13. Between 12 and 20
21. Bitten by an insect
23. Long poem___ out
26. Fruit of the oak
28. Type of tree
29. Aid
30. Fiend
31. Group of soldiers
33. Entanglement
35. Theme
37. Object of worship
38. Void
39. Peculiar
42. Measuring instrument
45. Swindle
46. Whorl
48. Rabid
50. Pesent formally
52. Wall painting
53. Curtain fabric
54. Temporary inactivity
55. Stroll
56. Pass a rope through
60. Remove unwanted plants
62. Variety
63. One time
64. Orderly
66. Up to the present time
68. Athlete who plays for pay

1	2	3	4	5		6	7	8	9		10	11	12	13
14						15					16			
17						18					19			
20					21		22			23		24		
			25			26		27			28			
	29	30					31		32					
33					34			35		36		37	38	39
40					41			42				43		
44			45	46		47					48			
			49		50		51			52				
53	54	55				56		57						
58				59			60		61			62	63	64
65			66		67			68		69				
70					71					72				
73					74					75				

SOLUTIONS ARE ON PAGE 49

SUDOKU MAY 2023

SOLUTIONS ARE ON PAGE 58

3			9		1	2	
5							3
9					6		5
		4	1			3	
6				2			7
		7					
	7			4			1
	9	2					
2				8	5		

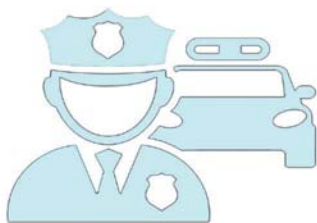
			2				4
				6	4	7	
2		9	8			4	7
	7	5			6		
				5	9		8
			6	7			8
4				9		3	
	3		5	2			6

			5	3		7	
	4	1				9	
				2			
							3
7			6				9
9	5			7		8	
	4		9				1
	9			5			
2	7	1				3	

	2			5	3		
				8		6	
1	3	5					
5			9	6	2	1	
				4			
		8					
		1				7	
2			7				
		3					5



IMPORTANT TELEPHONE NUMBERS



POLICE

Emergency Hotline: 191
 Pattaya Police Station: Soi 9 Pattaya
 Phone: 038 420- 802, 038-420 805 0-3842-9325
 Banglamung Police Station, Sukhumvit Highway)
 Phone: 038 221 800, 038 221 331
 Tourist Police: Phratamnak Road
 Emergency Hotline: 1155
 Phone 03841 4669, 03842 5937,

AMBULANCE AND HOSPITALS

General emergency number 191 can be used or 1669
 Pattaya International Hospital
 PhoneTel: 038 428 374-5. Tel: 038-427 575
 Bangkok Hospital Pattaya
 PhoneTel: 038-259-999. 0-3825-9911
 Pattaya Memorial Hospital
 PhoneTel: 038 488 777. 038-429 422

FIRE

Emergency Phone: 199
 Fire Brigade Pattaya
 PhoneTel: 038-425-943,
 Fire Brigade Naklua
 PhoneTel: 038-221-000,

SEA RESCUE

Marine Police
 Phone. 038-423 666
 Sea Rescue
 Phone 038-488 134

ELECTRICITY

Electricity Pattaya
 Phone 0-3842-6463, 0-3842-8502
 Electricity Banglamung
 Phone 0-3822-1007

WATER

Water Works Banglamung
 Phone 0-3822-1463
 Water Works Pattaya
 Phone 0-3822-2462/5

WASTE DISPOSAL

Garbage Collection
 Phone 0-3842-9494



Bringing Businesses Together

Are you looking for a partner to help your business or business community thrive?

At BBX we are an experienced and committed team, designed exclusively to help businesses grow

Who we are?

BBX is a community of business owners with a solution to immediately help with business cashflow needs.

How do we do it?

- We provide interest free credit to business owners in our community
- Business owners use this credit to purchase products and services within the community to help their business grow "No Cash Outlay"

What's our commitment?

- We will continue to build the BBX Business community providing sustainable opportunities focused on business needs
- We will support business initiatives and partnerships, nurturing them in parallel with new ideas.
- We will provide a secure financial platform for transaction management

Your Commitment?

- Our business community transacts via business trade credits. A willingness to be part of this extra revenue stream
- Our community of business owners connects and supports each other via fair trading terms, an understanding that strong relationships prosper with respect

Reach out to us, we are here to help all business grow!

www.bbxworld.com



SOLUTIONS

CROSSWORD PAGE 46

S	T	R	A	P		L	I	E	D		P	U	T	T
L	O	O	S	E		A	B	L	E		A	L	O	E
O	N	A	I	R		D	I	V	A		L	U	T	E
T	E	N	N	I	S		S	E	R	E		R	A	N
			I	O	T	A		S	T	P	A	U	L	S
	C	O	N	D	U	C	T		H	I	S			
W	A	G	E		N	O	R	M		C	H	I	N	O
E	R	R			G	R	O	O	M			D	U	D
B	E	E	C	H		N	O	T	E		F	O	L	D
			O	A	R		P	I	T	F	A	L	L	
S	P	A	N	N	E	R		F	E	R	N			
C	A	M		K	N	E	W		R	E	A	S	O	N
R	U	B	Y		D	E	E	P		S	T	O	N	E
I	S	L	E		E	V	E	R		C	I	R	C	A
M	E	E	T		R	E	D	O		O	C	T	E	T

HARD

3	4	6	5	9	7	1	2	8
5	8	2	6	4	1	7	9	3
9	7	1	8	2	3	6	4	5
7	9	5	4	1	6	8	3	2
6	1	4	3	8	2	9	5	7
2	3	8	7	5	9	4	1	6
8	5	7	9	3	4	2	6	1
1	6	9	2	7	5	3	8	4
4	2	3	1	6	8	5	7	9

HARD

6	9	7	2	1	5	8	4	3
5	8	3	9	6	4	7	1	2
1	4	2	3	8	7	5	6	9
2	6	9	8	3	1	4	5	7
8	7	5	4	2	6	9	3	1
3	1	4	7	5	9	6	2	8
9	5	1	6	7	3	2	8	4
4	2	6	1	9	8	3	7	5
7	3	8	5	4	2	1	9	6

MEDIUM

6	9	2	4	5	3	1	7	8
3	4	1	6	7	8	2	9	5
5	7	8	9	1	2	3	6	4
4	8	6	5	2	9	7	1	3
7	2	3	8	6	1	4	5	9
9	1	5	3	4	7	6	8	2
8	3	4	7	9	6	5	2	1
1	6	9	2	3	5	8	4	7
2	5	7	1	8	4	9	3	6

MEDIUM

8	2	6	4	5	3	9	1	7
4	7	9	2	8	1	6	3	5
1	3	5	6	7	9	8	2	4
5	4	7	9	6	2	1	8	3
3	6	2	1	4	8	5	7	9
9	1	8	5	3	7	2	4	6
6	5	1	3	2	4	7	9	8
2	8	4	7	9	5	3	6	1
7	9	3	8	1	6	4	5	2

Locations to visit where popular TV shows and movies have recently been filmed



In March's issue we wrote about favourite film locations to visit with the kids. If you missed this article you can still read it online at pattayatrader.com Now we bring you some more filming locations that you may wish to add to your travel bucket list. Ed

Sicily - The White Lotus

Sicily was shown to great effect in the second series of *The White Lotus* the hit black comedy. Much of the action took place at the beautiful Sam Domenico Palace resort in Taormina, a medieval town with an amazing third century BC amphitheatre. Other exterior locations included Palermo and Noto.

Inishmore - The Banshees of Inisherin

Almost an additional character in Martin McDonagh's hauntingly beautiful film the island is given the fictional name of Inisherin. However, the actual location is Inishmore, the largest of Ireland's Aran Islands. Accessible from the mainland by a ferry from County Galway, it has dramatic landscapes, sprawling green fields and spectacular vertical, stone cliffs.



Euboea - Triangle of Sadness

Euboea (sometimes called Evia) is the second-largest Greek island and was a major filming location for *Triangle of Sadness*. After the film's shipwrecked wealthy guests and crew were seen stranded on a deserted pebble beach, the island was awarded the Best European Film Location of 2022 by the European Film Commission Network. Chiliadou Beach on Euboea continues to be especially popular with backpackers and campers alike.



Busan - Decision to Leave

Busan, the bustling South Korean port city is known for its beaches, temples, and fresh seafood. It's also where much of "Decision to Leave", a South Korean award-winning movie was shot. Visit the streets of Choryang-dong where detective Hae-jun chased his suspect up the area's famous 168 stairs. Or jump on a monorail for fantastic views of Busan Port.



Rome - Fast X

Many iconic movies have been filmed in the Italian capital of Rome, and now the latest instalment of the Fast & Furious franchise Fast X has high-speed chases through the city's ancient streets. The film's trailer also features Vin Diesel standing in front of the Colosseum, the Ponte Umberto I, and Giuseppe Garibaldi Square.

Atlanta - Black Panther: Wakanda Forever

Although most of the 2 Black Panther movies were filmed in studios, there are a few locations in Atlanta that you can visit. For example, the High Museum of Art, where Erik Kilmonger steals a vibranium weapon in the first film, and City Hall, which appeared in the post-credit scene. A 30-minute drive away is Bouckaert Farm in Chattahoochee Hills, the backdrop for the battle between the Dora Milaje and Border Tribe. Then you can head to Mary Ross Waterfront Park in Brunswick, where some ship and underwater scenes in Wakanda Forever were shot.





London's Southbank

London's Southbank area is a vibrant part of the capital. There is always plenty going on here by the banks of the Thames. Starting at Westminster Bridge you'll see the iconic Big Ben and historic Houses of Parliament on the other side of the bridge. Then walk along past the wonderful Sea Life Centre London Aquarium to the London Eye where there's always a massive queue of expectant tourists ready to take a spin and get some wonderful views of the capital. Next to this is Jubilee Gardens, a public park created in 1977 to mark 25 years of Queen Elizabeth II's reign.

Carry on along the river path and you'll reach Southbank Centre, it is in fact Europe's largest centre for the arts and not difficult to miss being bright yellow. With the Royal Festival Halls, Hayward Gallery, Purcell Rooms and Queen Elizabeth Hall there are concerts and exhibitions happening every day of the year (apart from Christmas Day). Plus there's an amazing street food market just behind.

SOUTHBANK CENTRE



Aladdin Sane: 50 Years

Thu 6 Apr - Sun 28 May



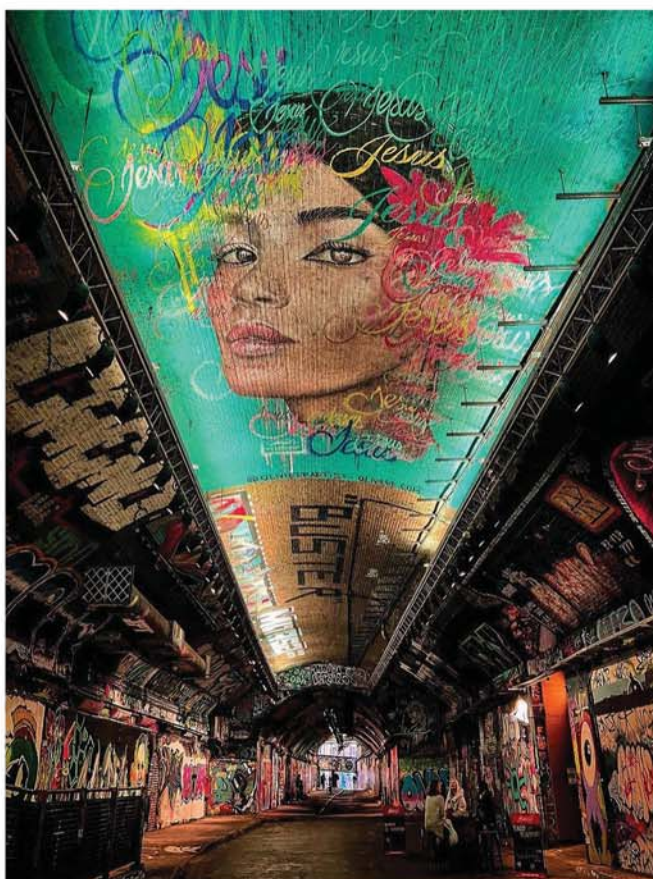
We saw a beautifully curated exhibition marking the 50th anniversary of Aladdin Sane David Bowie's iconic 1973 album with one of the most influential album covers ever shot by photographer Brian Duffy. On until the 28th May you can keep track of future events happening at this space via the website <https://www.southbankcentre.co.uk/>

Just a little further as you pass Waterloo Bridge you'll come to the National Theatre where there are usually several productions happening at any one time. Another good website to check out ahead of your trip <https://www.nationaltheatre.org.uk/whats-on>. Then just behind the BFI imax cinema



This dynamic area at the heart of London's cultural scene is not just great for paid entertainment. There's plenty to see as you walk along the riverside walkway, lined with trees, restaurants and historic pubs. Often a site for fairs, book stalls and pop up events. Sightseers can also admire the skateboarders doing their thing under the arches. Not originally planned as a purpose built park, the area has been adopted as the spiritual home of London's skateboarders

Another popular addition is Leake Street which now has Marc Craig as artist In Residence 2023/24, who can guide you through the process of creating your very own graffiti masterpiece.



After a quick tour of the vibrant Leake Street scene you may wish for a little retail therapy at Gabriel's Wharf, a former garage site that has been turned into a popular collection of independent restaurant and shops. Or the OXO tower which also has shops, galleries and a restaurant with amazing views of the city.

Or take a look at the Tate Modern, home to the nation's largest collection of art dating from the 1900s. From here you can see views of St Paul's Cathedral, as well as the Millennium Bridge, designed to look like it's twisted.

Then Shakespeare's Globe theatre, a reconstruction of the Elizabethan playhouse and the only thatched roof permitted in London since the Great Fire of London

A great finishing point for your bankside walk is Borough Market which can be found at London Bridge. This is the largest and oldest food market in London dating back to the 12th century. There's something for everyone here, from fresh produce and flowers to a sit-down meal.

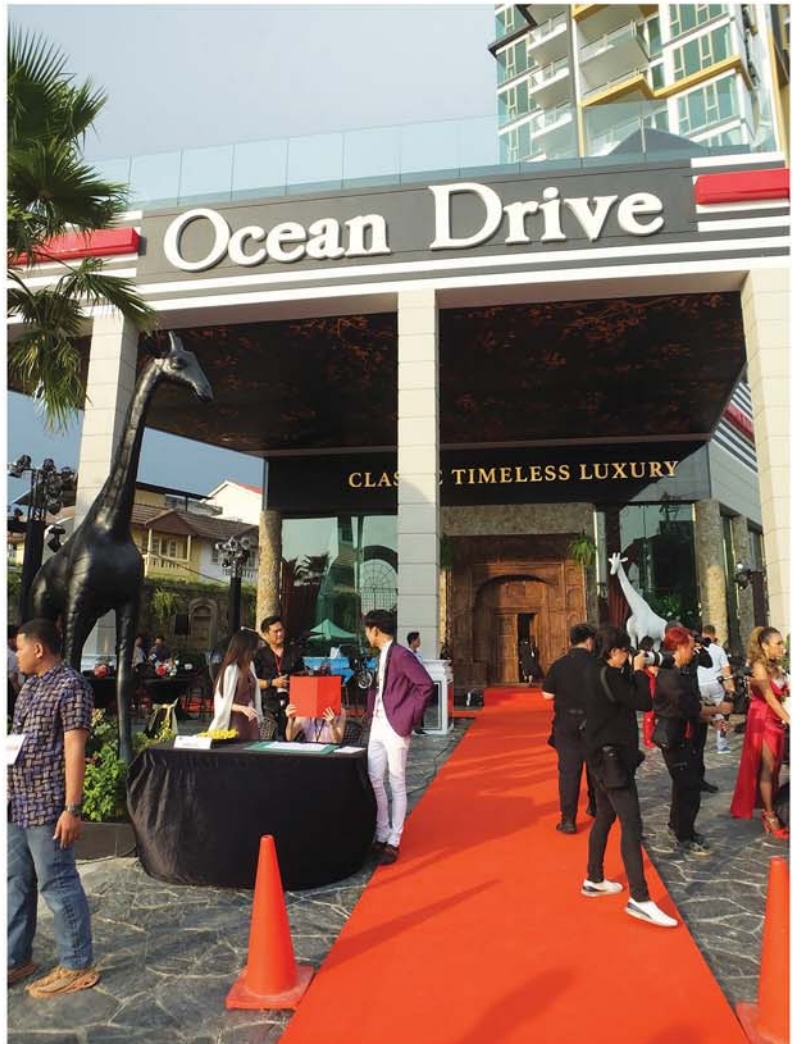
The Riviera Ocean Drive



Winston and Sukanya Gale celebrated the opening of their latest luxury condominium with family, friends and colleagues at a spectacular Grand Opening Party.

Complete with Fashion show, Celebrities and a fantastic buffet supplied by The Avani Pattaya Resort Hotel, it was a great night.

Thanks to Rodney James Charman and Phil Mitchell for the photos







Trends for Swimming pools in 2023

If this hot weather has you longing for your own pool take a look at this year's trends.

In 2023, the trend in design has concepts that seek to make the pool a work of art. The objective being to give the pool its own personality and a leading role next to the house. One of the ways that you can achieve this is by backlighting your pool liner. To do this, you should opt for opalescent coatings such as vetrite. Vetrite semi-transparent characteristics allow it to be backlit. In addition, you can include LED panels on the inside of the coating



Sunbathing will no longer be an activity just to be enjoyed out of the water, on the terrace or on the grass, but rather inside the pool. To make this trend a reality you must include a wet solarium in the design of your pool and include specific furniture that can be used in the water, such as Lux Loungers. The shallow water areas provided in tanning shelves are ideal for swimmers to cool off on a hot day. Tanning shelves are also known as sun shelves and Baja shelves, and they don't require the bather to fully immerse their body in the pool. So people can splash and play on these shelves, making them a perfect choice for those who don't like deep water.

You can also transform the ambience of your pool by illuminating it at night not only within the pool water. You can create an illuminated border outside the pool by adding lights to the surrounding deck or patio. Or use uplighting to illuminate tree branches, shrubs and plants and downlighting for structures such as patios, statues, fountains etc

Infinity pools are hardly a new trend as these vanishing-edge additions to typical backyard pools have been popular since the 1950s. A great option for a pool near a slope, this dramatic effect is always impressive. However, 2023 is taking this trend in a totally new direction, using multi-tier pools and even infinity ledges incorporated with swim-up bars. If you like the idea of a bar but don't necessarily want to be in the water while enjoying a beverage, build one at the side of the pool that can be perfect for entertaining.



Maximum functionality is another major trend. Not just a huge pool occupying 80% of the land, but rather a space that combines a pool, a terrace, a play area, a barbecue area and a solarium area. You can also incorporate plants at the pool's edge for a cohesive design. If you want a spot to take a dip, but don't have much room a plunge pool can be the perfect solution.

Or you can modernise your existing pool space by using natural materials which is a huge trend in everything this year. Do it by incorporating a few rocks around the edge, or line the bottom of the pool completely with natural stone for a unique alternative to pool liners.



If you don't have much space to devote to a swimming pool then a narrow design may be the way to go. Increasing in popularity this design still allows the dedicated swimmer to do laps and also gives space for lounging and sunbathing.

Fun - loving kids and adults alike will love you for incorporating a slide into the design of your swimming pool. Whether enclosed, winding or complete with spray jets it's a sure way to have plenty of fun in the sun!





3 tips to help your listings generate more inquiries

By Cheyenne Hollis

Stressed over underperforming listings? Here are some tips to help them generate more inquiries

One question real estate professionals are always asking us at Dot Property Group is, “How do I get more inquiries?” The first place to start is listing quality. Simply put, the better a listing is, the more visible it will be. And more people seeing your listings usually equates to an increase in the number of inquiries you’ll receive.

So, what do we mean when we say listing quality? This refers to the quantity and accuracy of the information you have provided. The best listings are ones containing lots of details and photos. That’s because the biggest pain point for property seekers when it comes to listings is not having sufficient material to make a decision. This can be a lack of basic details about the property, not enough photos, incorrect facts or a combination of all these factors. Anything that may hinder a person’s search process impacts quality. With that in mind, here are a few tips to help you create high-quality listings that will increase visibility and generate more inquiries.

1) Use the correct location

Real estate is all about location and this is an important factor for property seekers. That means you should use the exact area for listings, not an approximation. Additionally, be truthful about what’s nearby and distances to places of note. Someone interested in your property will ultimately find out its real location anyway, so there is no need to hide it from them.

2) Don’t skimp on the photos

More is always better as it relates to photos. You should aim for each listing to have at least 12 pictures to accompany it, including one of every room. The goal is to ensure those looking at the property have a solid understanding of whether it is right for them. While we are on the topic of photos, be sure you are using high-quality ones that do not contain any watermarks. Finally, if the pictures are dark or cluttered, consider hiring a professional service that can enhance lighting and edit them to make rooms look more appealing.

3) Revisit underperforming listings

If you have a listing that isn’t receiving many impressions or inquiries, consider editing it. We recommend changing the title and cover photo while also adding information to the description. These changes may seem minor but can make a real difference. Ideally, you should go through your portfolio once a month and update any underperforming listings.

Following these three tips to help your listings generate more inquiries is a great place to start.



BANGKOK POCKET PARKS SPRING UP ACROSS THE CITY.

Bangkok pocket parks have been springing up across the city as part of Governor Chadchart Sittipunt's plan to provide easy access to green spaces. Of course, these are not always found in the most prominent places, blink and you just may miss many of them.

However, that is, in some way, by design. The Bangkok Metropolitan Administration (BMA) has teamed up with numerous stakeholders to transform unused land into something that has value. As you would expect, these plots aren't always the most conventional sizes or shapes but that's what makes them perfect for the initiative.

With land in the city centre limited and quite expensive, a new approach has been needed and this program does just that. It takes sites that would otherwise go unused and turns them into something productive. Areas underneath overpasses, alleys and plots too small to develop are among those to be given a second life.



Of course, these are limited. You won't be able to run laps, play soccer or get lost in a sea of trees. That is not the intention. Bangkok pocket parks are designed to be communal spaces where families can spend time outdoors and local residents can enjoy nature without needing to commute across town. Converting these sites from nothing into a park is a win-win for everyone.

The public gets a much-needed, albeit a small, place that would otherwise sit empty and, if we are being honest, collect garbage. Meanwhile, the BMA can improve livability at the grassroots level and private landowners who participate can enjoy tax breaks.

The end goal is to have enough Bangkok pocket parks to ensure residents are a maximum of 15 minutes away from a green place. To accomplish this, the BMA is expected to convert more than 100 unused sites into parks with plots held by City Hall, state-owned enterprises and private individuals. Current plans call for these to be completed by 2025.

At the end of the day, Bangkok pocket parks aren't exactly game changing. And most Bangkokians probably won't even realize they exist. That is what happens when you build something on land that no one knows what to do with. However, that doesn't mean it's a bad plan.

On the contrary, you will find plenty of people enjoying these during the day. Considering the alternative to being no green space at all and Bangkok pocket parks are an excellent initiative that helps make the Thai capital slightly more livable. If only something could be done about the pollution...just saying.



**VISIT OUR OFFICE
FOR EXCLUSIVE
DEALS THAT
YOU WON'T
FIND ONLINE**

**Our office:
The Avenue Pattaya
Contact us via LINE**



 +66 38 416 728
 www.pattaya-property.net


**"DON'T HIT THE ROAD
WITHOUT CHECKING OUR
ONLINE PRICES FIRST"**



**YOUR WALLET
WILL THANK YOU**

WWW.PATTAYARENTACAR.COM

CONTACT US

 +66 83 077 6928

 PATTAYARENTACAR



Brand New Off-Plan 3 Br. House, Huay Yai
 For Sale 6.95 MB | Code: PCH6797
 🏠 162/380 sqm 🏠 Private House



2 Br Condo in FQ in Exclusive Residence, Pratumnak
 For Sale 6.35 MB | Code: PC8249
 🏠 103 sqm 🏠 Villa Norway 2



Modern 3 Br House for Rent in East Pattaya
 For Rent 40,000 THB | Code: PP9440
 🏠 125/156 sqm 🏠 Baan Fah Greenery



Spacious 1 Br Condo in FQ in Central Pattaya
 For Sale 2.99 MB | Code: PP9438
 🏠 58 sqm 🏠 City Garden Pattaya



Studio in FQ in Wongamat, Naklua
 For Sale 3.95 MB | Code: PP9420
 🏠 33 sqm 🏠 The Palm Wongamat



Just Renovated 4 br. Private house in Na-Jomtien
 For Sale 12.5 MB | Code: PP9422
 🏠 186/260 sqm 🏠 Private House

DO YOU HAVE A PROPERTY FOR SALE OR RENT IN PRATUMNAK? GUSTAF REAL ESTATE HAVE CUSTOMERS WAITING FOR YOU!



GUSTAF REAL ESTATE

We speak Swedish, English and Thai so
just relax and let our friendly team
help you



1 bedroom corner apartment in City Garden Tower Pattaya

Very nice corner apartment 44 sqm on floor 13. With sea and city view from balcony and every window in the apartment. Great location. This unit is in foreign name

Price 4 750 000 Thb



1 bedroom condo in South Pattaya for sale

On floor 4 of the City Garden Olympus, Balcony with pool view. 26 sqm. This unit is in foreign name Transfer 50/50

Price 2,590,000 Thb



Starting from
12.6 Million Baht

Phone 090 250 3621
for more information



For viewing and more information please call

+66(0)90 250 36 21 www.gustafrealestate.com

324/5 Soi Chaiyaphruek 1 Moo12, jomtien info@gustafrealestate.com